



National Organization for the Professional Advancement
of Black Chemists and Chemical Engineers

Regional Infrastructure Rollout

Regional Leadership



Agenda

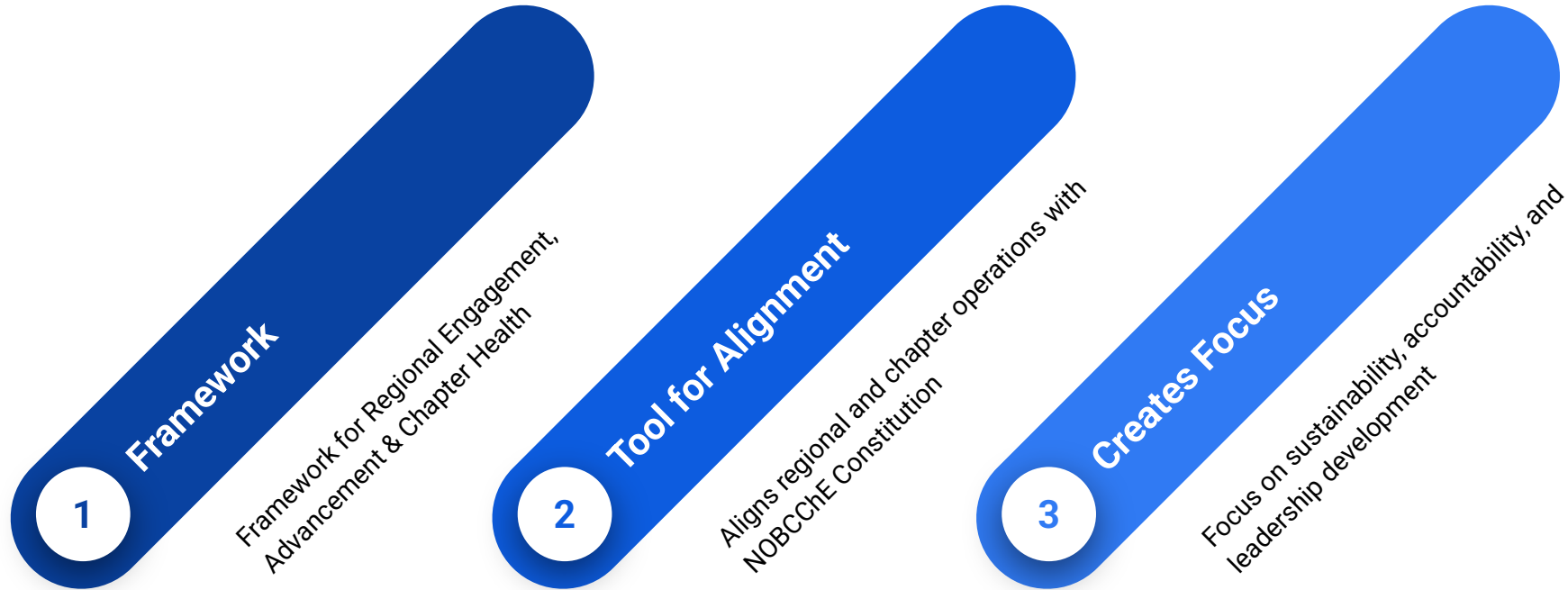
- Introduction to REACH Document (30 minutes)
 - Updated Regional Structure
 - New Chapter Requirements
 - Programming Guidance
 - Chapter Reporting
 - Chapter Recognition
 - National Timeline
- Regional Advisory Committees (20 minutes)
 - Role Definitions
 - Nomination and Election Process
 - Training/On-boarding
- Q&A (10 minutes)



NOBCChE's R.E.A.C.H.:

Chapter Guide for Regional Engagement, Advancement
& Chapter Health

What is R.E.A.C.H?



But Why R.E.A.C.H?



Strengthen
chapter health
and consistency

Clarify roles and
expectations



Support equitable
programming and
recognition



Dr. Ronald Lewis
West Region
Aardvark Therapeutics



Dr. Safiyah Muhammad
Midwest Region
Dow Chemical



Dr. Brea Manuel
Northeast Region
Howard Hughes Medical
Institute



Dr. Keturah Adams
Southwest Region
Southwestern Oklahoma State
University



Dr. Pamlea Brady
Southeast Region
Talladega College

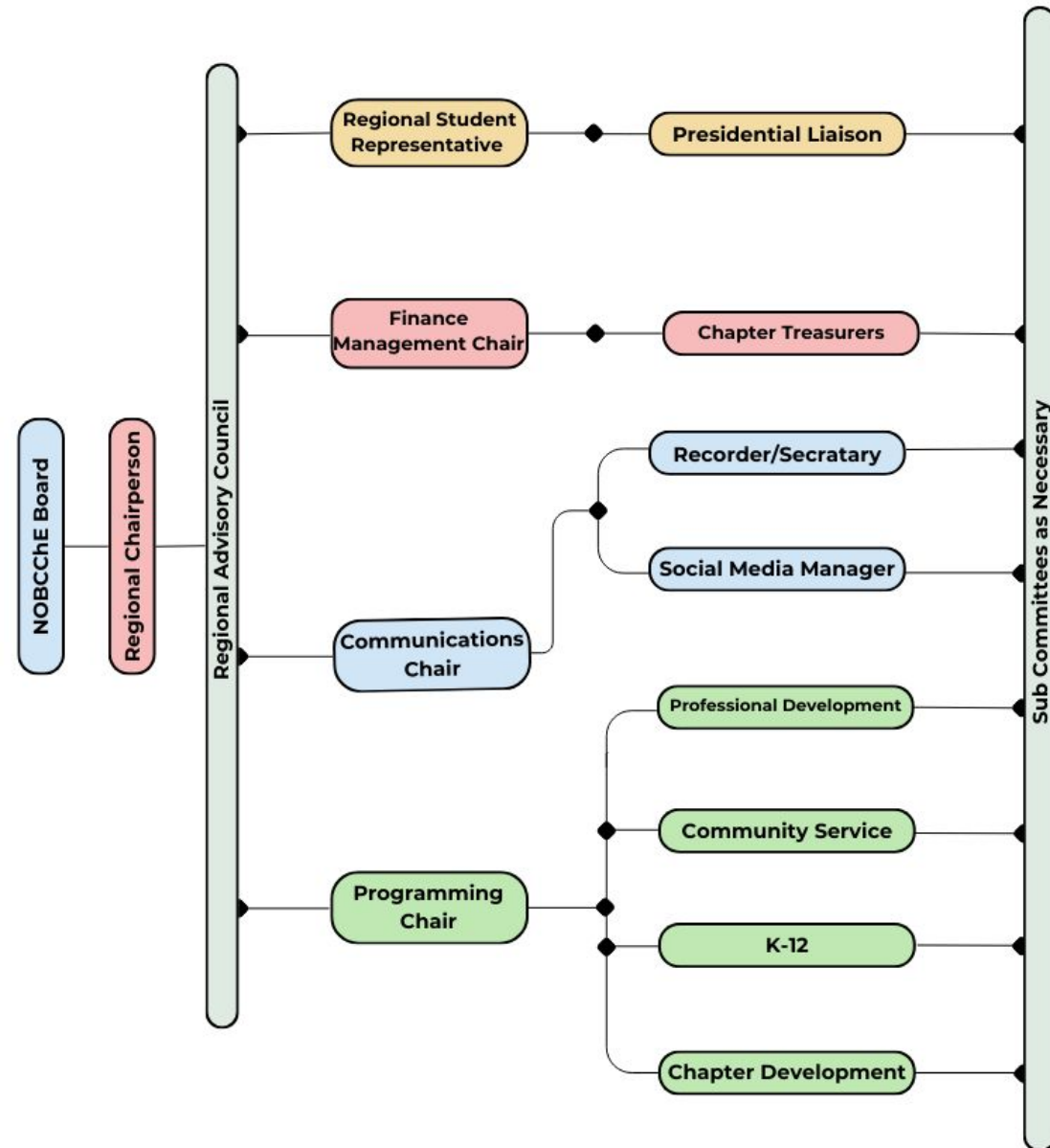


Dr. ChaMarra Saner
Vice Board Chair
National Treasurer
Regional Infrastructure Chair
Catawba College

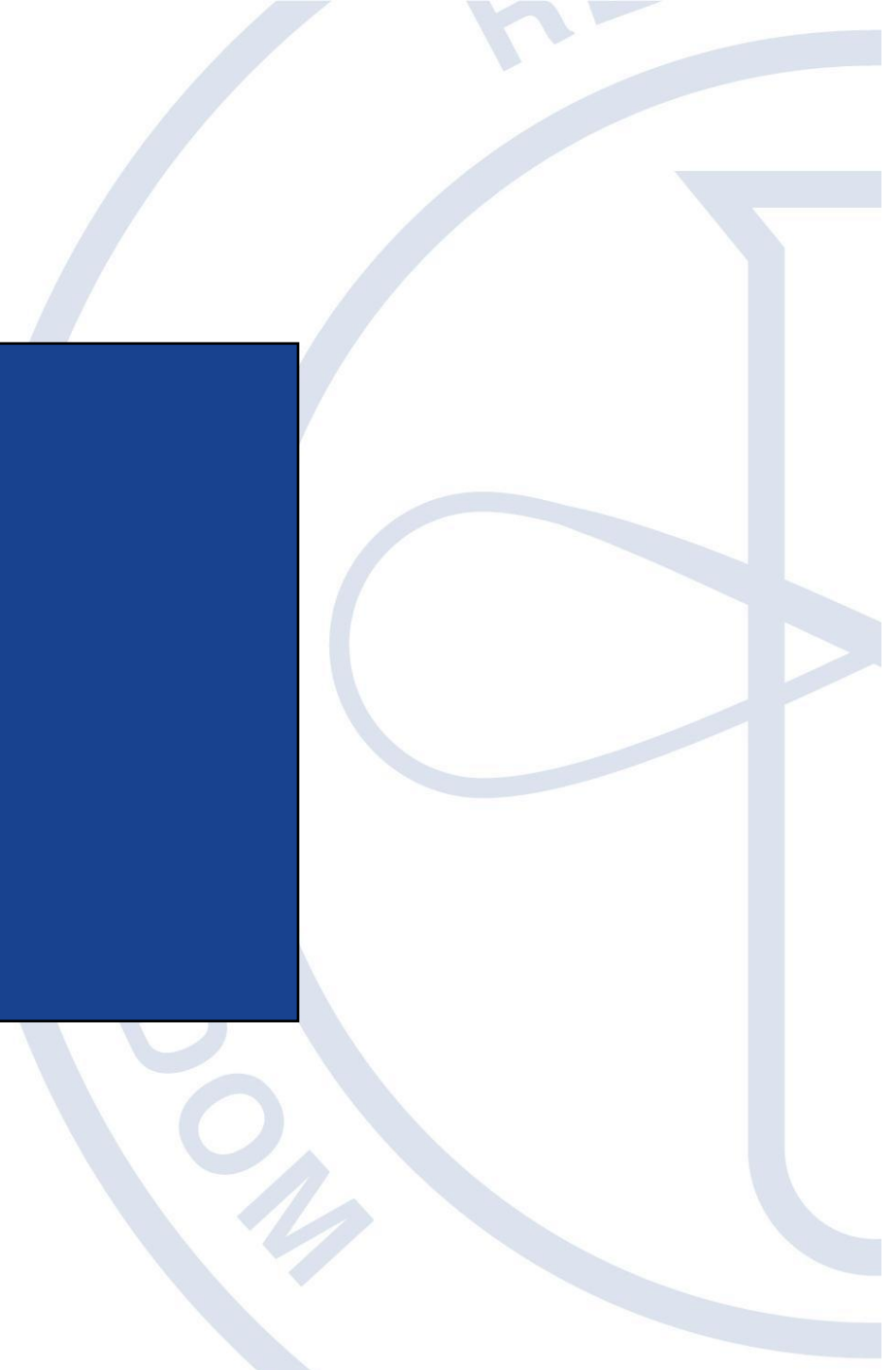
Regional Advisory Councils (RACs)

What are the benefits of this structure:

- Executive-level regional committees
- Required chapter participation
- Ensures two-way communication and continuity



New Chapter Requirements



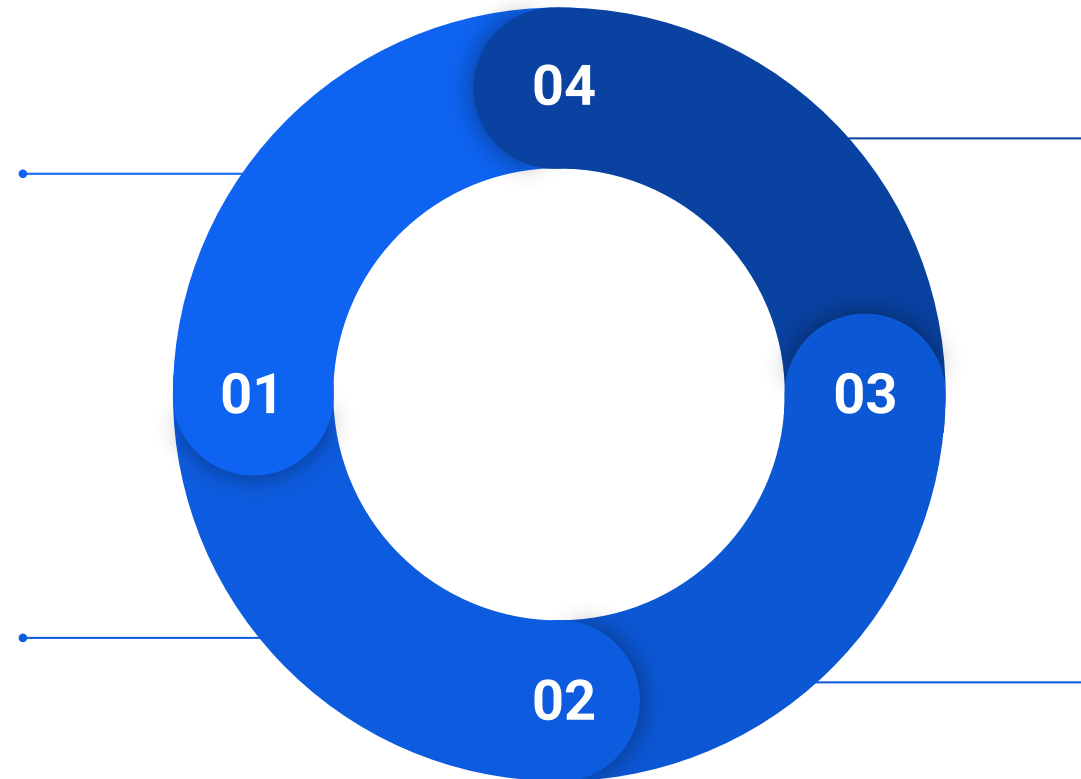
Chapter Requirements

Minimum Leadership Structure

Maintain at least three officer positions filled during the academic year

Paid National Membership Threshold

All executive board members, a minimum of 3, registered NOBCCChE student members (for student chapters) or 7 professional members (for professional chapters) must be paid National members of NOBCCChE.



Required Activities Annually

All chapters are required to conduct a minimum of 4 activities during the academic year in the areas of professional development, outreach/community service, fundraising, and chapter development.

Reporting Compliance

Lorem ipsum dolor sit amet, consectetur adipiscing elit, sed do eiusmod tempor. Donec facilisis lacus eget mauris.

Chapter Status

Chapters can be classified as:



Active



Dormant



You have met the requirements outlined.



You have NOT met the requirements outlined.

Submit a Chapter Reactivation Form to the regional chairperson via the National NOBCChE office



Establish a full leadership team with all required positions



Register the minimum required number of members



Develop and submit a Chapter Revival Plan outlining goals and activities for the upcoming year



Attend a reactivation orientation with a Regional NOBCChE representative

Reactivation Pathway

Chapter Reporting

Self Assessment

Two broad goals

Describe an activity that exemplifies your chapter's commitment to NOBCChE

Two goals for next year

Professional Development & Career Enhancement

How does programming address NOBCChE's mission to promote career advancement?

Describe one signature professional development event with the greatest impact.

Community Outreach & STEM Education

Do activities align with NOBCChE's commitment to increasing minorities in STEM?

How did your activities inspire the next generation?

How did you assess the impact of your activities?

Chapter Reporting

Chapter Development & Membership engagement



- Does your chapter foster a sense of community and belonging?
- How did you recruit and retain members?
- How do you create an inclusive environment?
- Was there any collaboration with other NOBCChE chapters?
- What is your succession plan for sustainability and continued growth?

Leadership Development & Advocacy



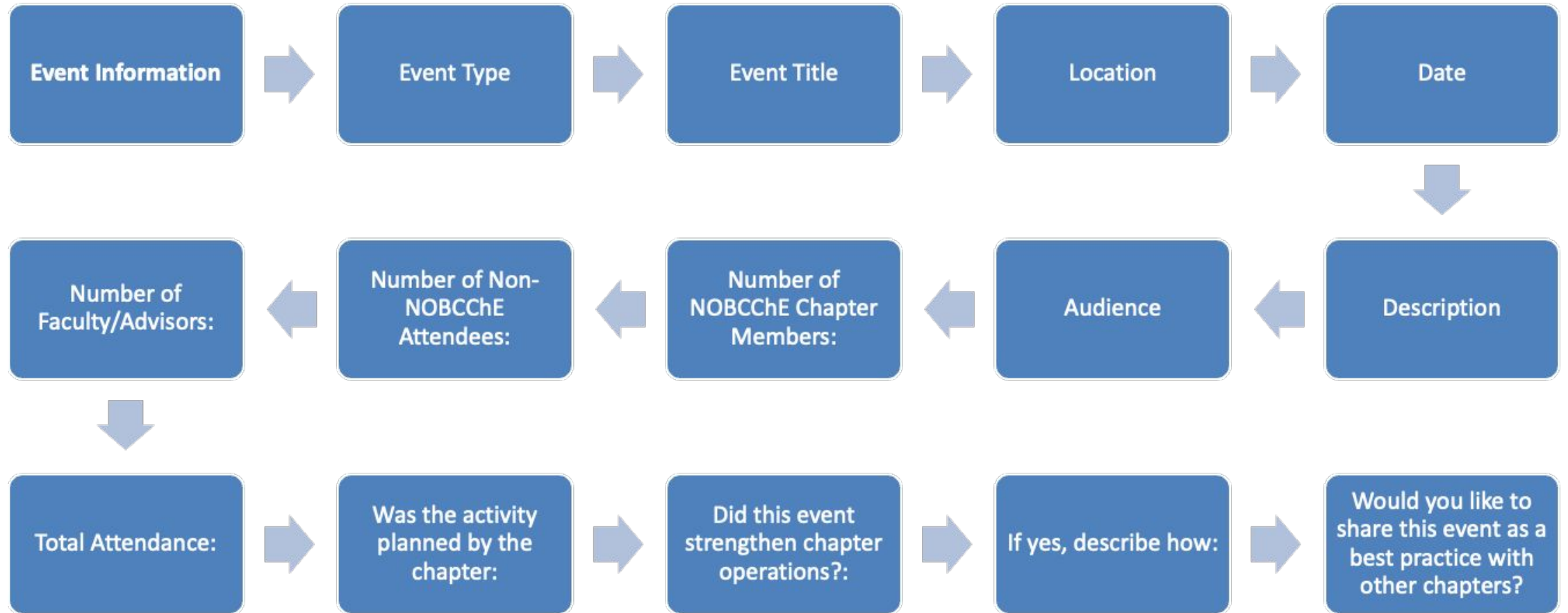
- How do you develop leadership skills in your members?
- How do you advocate for increased well-being, equity and belonging in STEM education and careers?
- Describe an initiative you implemented to reduce barriers for an underrepresented community.

Financial Management & Sustainability

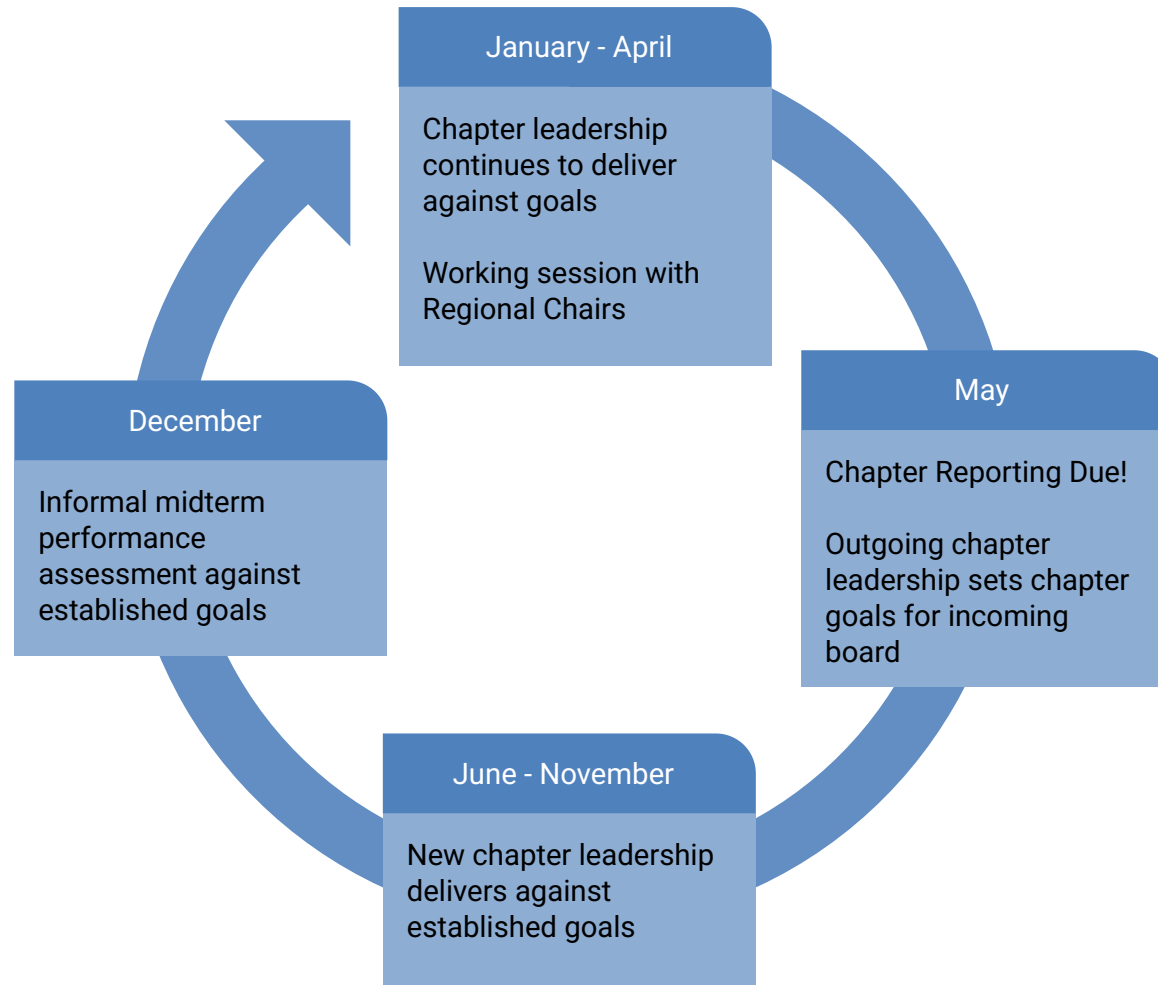


- Can your chapter fundraise?
- What sources of funding do you use?
- How do you use financial resources to advance NOBCChE mission and support membership development?
- Is your funding model sustainable?

Chapter Reporting- Event Information



Chapter Reporting Cycle



Awards

Chapter Awards



Joseph S. Francisco
Presidential Excellence Award



Marie Maynard Daly
Achievement Award



Percy Julian
Commendation Award

Regional Awards



Henry A. Hill
**Outstanding Chapter
Award**

Additional Regional Recognitions

Leadership Excellence Award

- a. Recognizes outstanding first-year regional leaders
- b. Honors exceptional service during 1-year term positions
- c. Commemorative plaque and feature in NOBCCHE newsletter & social media outlets

Regional Committee Excellence Awards

- a. Outstanding Communications Committee Performance
- b. Outstanding Programming Committee Performance
- c. Outstanding Financial Management Performance

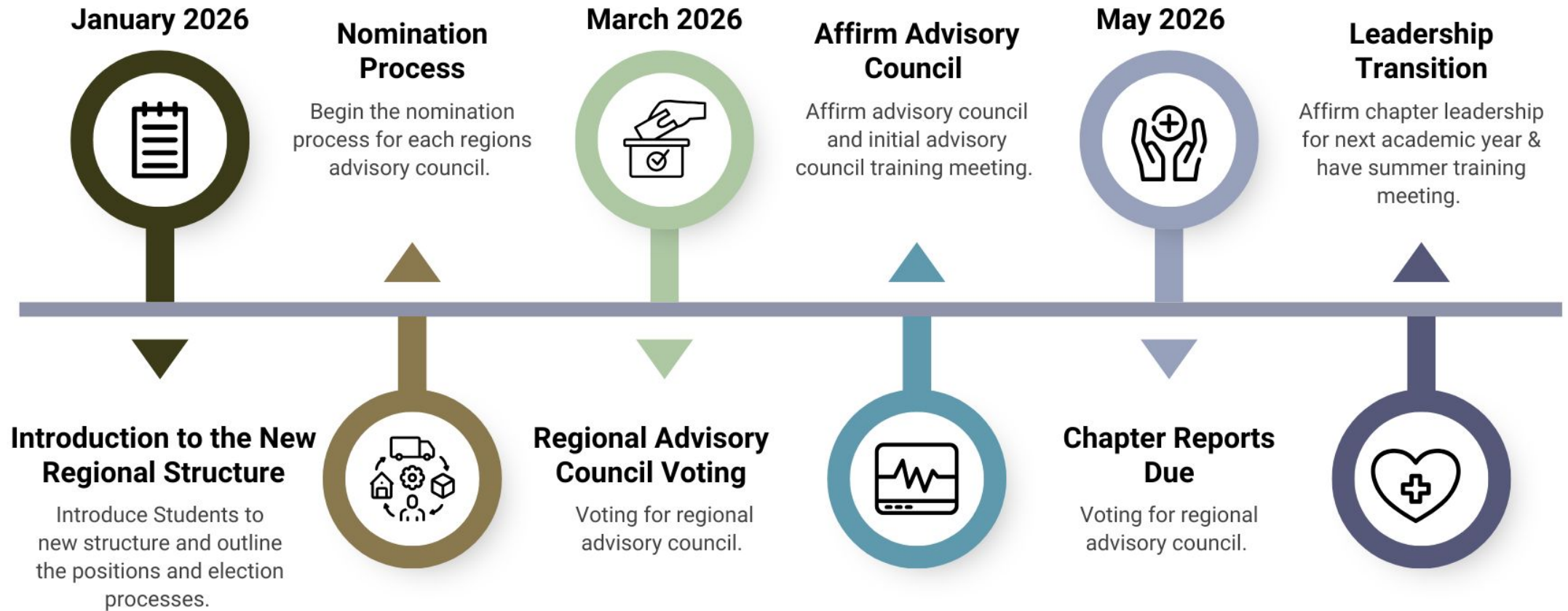
Rising Star Volunteer Award

- a. Recognizes exceptional subcommittee members
- b. Provides pathway to leadership positions
- c. Includes conference registration discount for following year

Chapter Recognition Categories:

- Regional Chapter of the Year
- Most Improved Chapter
- Best Collaborative Initiative
- Innovation in Community Outreach
- Excellence in Professional Development

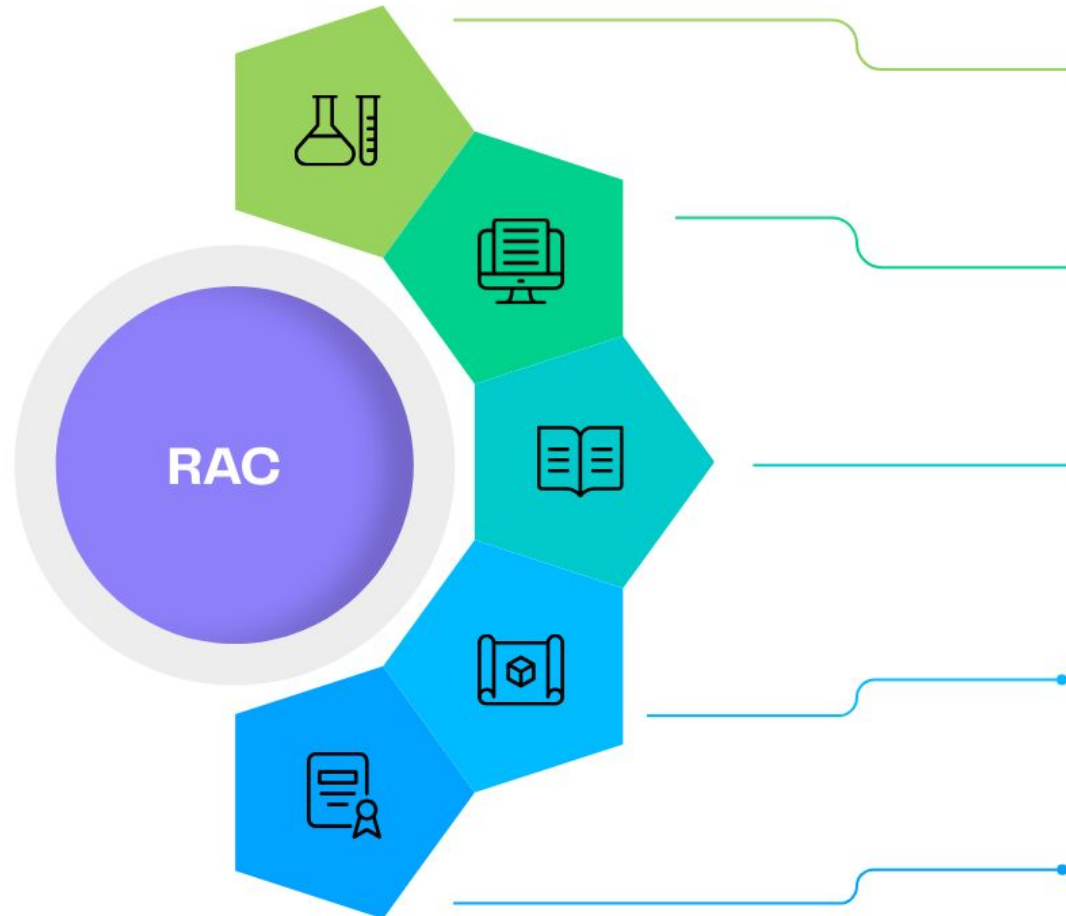
Timeline





**NOBCChE's Regional
Advisory Councils (RACs)**

Regional Advisory Councils (RACs) Roles



Regional Chairperson

Provides strategic leadership for the region, represents regional interests on the National Board, and ensures all regional and chapter activities align with NOBCChE's mission, constitution, and governance standards.

Communications

Leads all regional communications by managing records, coordinating messaging, and amplifying chapter achievements through newsletters, digital platforms, and official updates.

Programming

Oversees the planning and execution of regional programs across professional development, community service, K-12 outreach, and chapter development to ensure impactful and mission-aligned engagement.

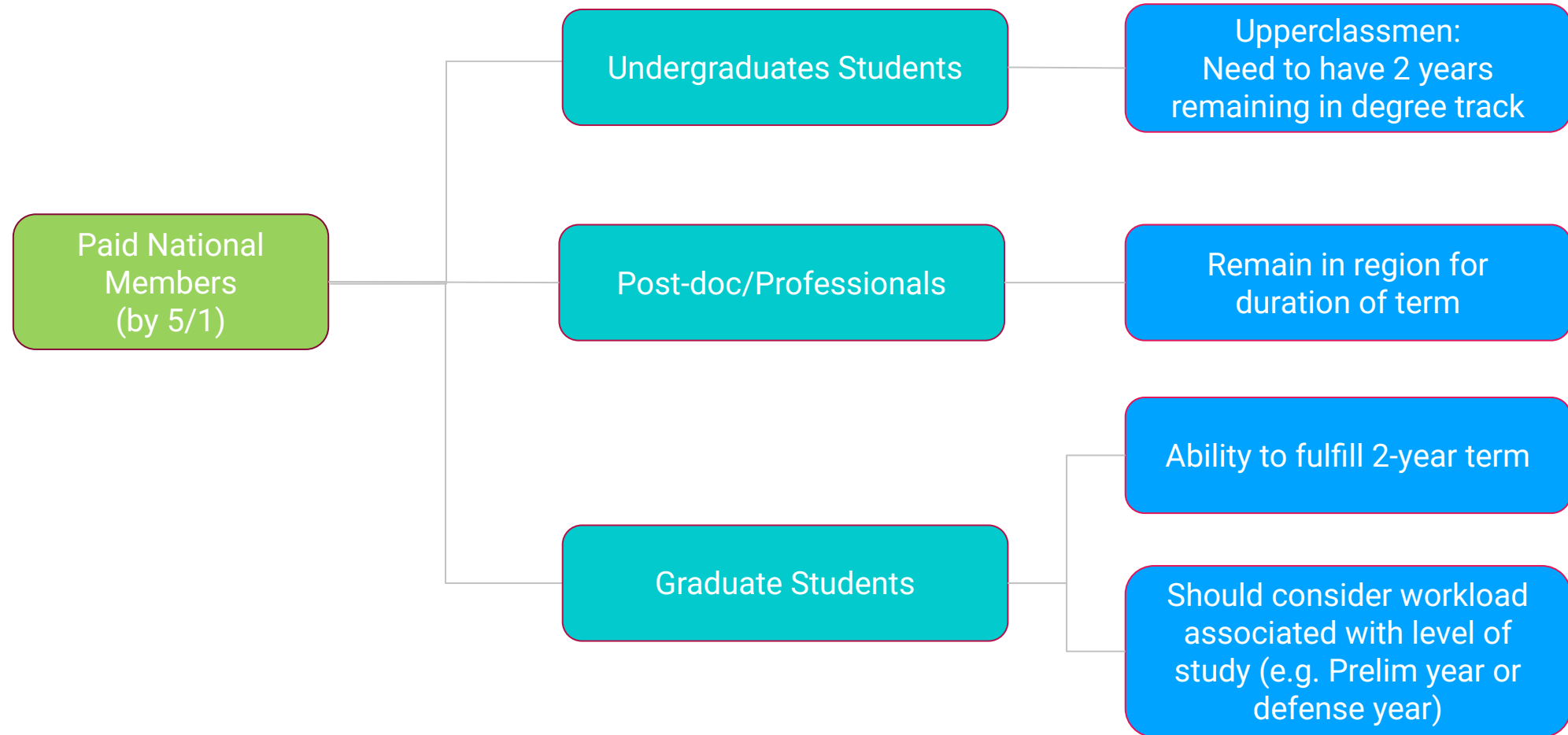
Financial Management

Manages regional finances, oversees grants and funding processes, and ensures transparent, compliant, and sustainable financial practices across chapters and regional initiatives.

Regional Student Representative

Serves as the primary advocate and connector for students or professionals in the region by supporting chapter engagement, recruitment, onboarding, and communication across the regional network.

Co-Chair Eligibility



Regional Advisory Councils (RACs) Roles (continued)

Programming Chairs

K-12 Outreach Lead
Coordinates regional K-12 STEM outreach and engagement initiatives.



Professional Development Lead
Develops career-focused programming for students and professionals.



Chapter Development Lead
Supports chapter growth, sustainability, and leadership transitions.



Community Service Lead
Organizes regional service initiative aligned with NOBCChE's mission.



Regional Advisory Councils (RACs) Roles (continued)

Communications Chair

01



Social Media Coordinator

Manages regional social media content to promote events, share chapter highlights, and increase engagement.

02



Recorder / Secretary

Maintains meeting minutes, attendance records, and official documentation for the committee or chapters.

Financial Management Chair

Chapter Treasurer

Oversees chapter finances, budgeting, and financial reporting in compliance with NOBCChE requirements.



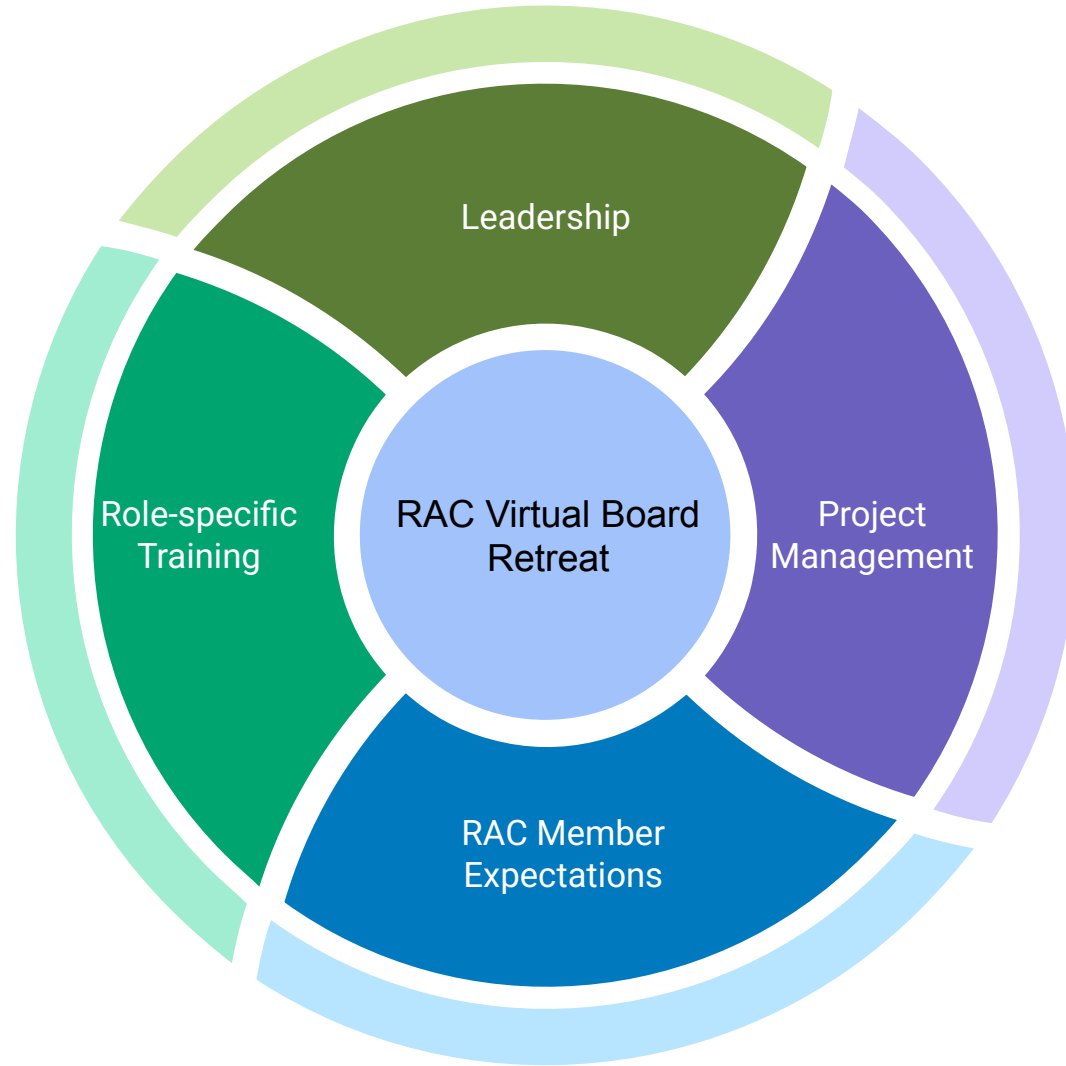
Regional Student Rep



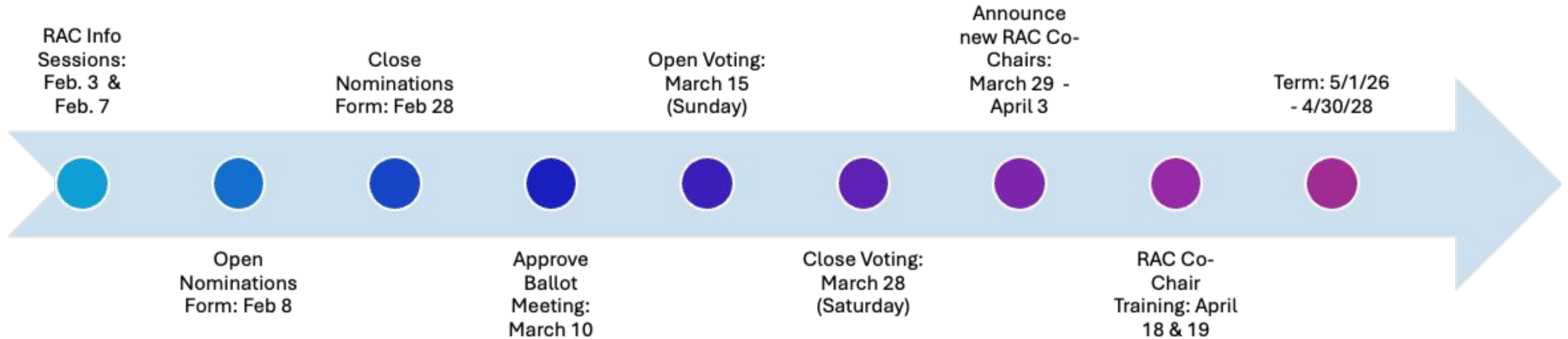
Presidential Liaison (Chapter Presidents)

Connects chapter leadership with regional initiatives and feedback.

Training & On-Boarding



Nominations & Election Process- RAC Co-Chairs



Thank You!

NOBCCChE[®]
National Organization for the Professional Advancement
of Black Chemists and Chemical Engineers